

Main Features:

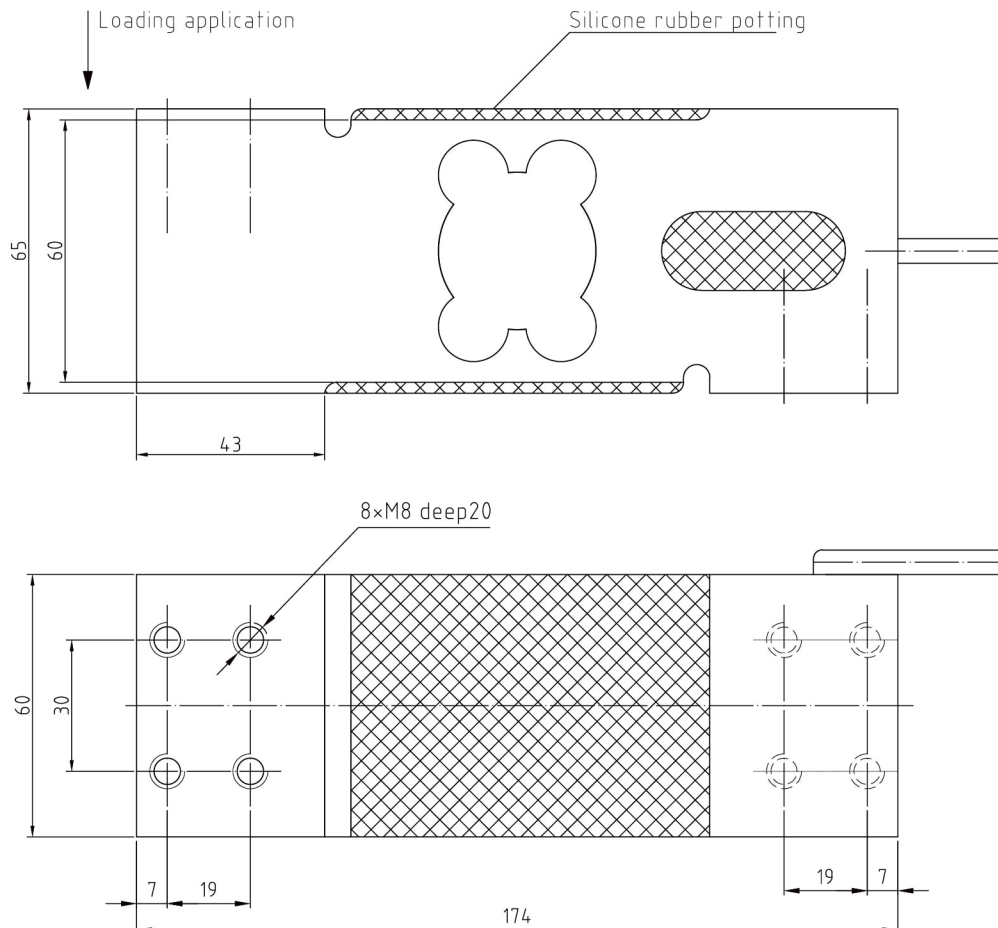
- Material: Aluminum
- Rated Capacities: 100kg-750kg
- OIML R60, NTEP HB44, CPA, CE and RoHS certified
- IP Rating: IP66
- Suitable for single and double load cell structural platform scales
- Max platform size: 600*800mm



Product description:

SP1263 is a typical and standard aluminum single point load cell that is with large capacity by 750kg and ideal for a wide range of weighing equipment. Environmentally sealed with potting compound to ensure reliability and durability. The industry standard size and mounting hole configuration makes the SP1263 is suitable for large-size platform by 600*600mm, or as a replacement for existed weighing equipment. Except for common applications of weighing equipment, it is also can be used for force measurement for controlling.

Dimensions (mm&inch):



SP1263 Single Point Load Cell Specifications

Parameter		Units	Specifications	
Model No.			SP1263	
Rated capacity (E _{max})		kg	100 / 150 / 200 / 300 / 500 / 750	
Accuracy class ¹²⁾			C3	C6
Min. dead load		kg	0	
Rated output		mV/V	2.0 ± 0.2	
Zero balance		% of E _{max}	± 2	
Repeatability error		% of AL ³⁾	< ± 0.010	< ± 0.005
Creep; 30 minute		% of AL	< ± 0.017	< ± 0.0083
Min. dead load output return (DR); 30 min		% of AL	< ± 0.017	< ± 0.0083
Temp. effect on	Min. dead load output	% of E _{max} /°C	< ± 0.0020	< ± 0.0014
	Rated output ²⁾	% of AL/°C	< ± 0.0012	< ± 0.0006
Temperature range	Compensated	°C(°F)	-10 to +40 [+14 to +104]	
	Operating		-10 to +50 [+14 to +122]	
	Safe storage		-30 to +70 [-22 to +158]	
Excitation voltage	Recommended	V AC/DC	5 ~ 15	
	Maximum		15	
Terminal resistance	Excitation	Ω	403 ± 5	
	Output		350 ± 3	
Insulation resistance @50VDC		MΩ	> 5000	
Breakdown voltage		V AC	> 500	
Seal type / IP rating			potted silicon sealed / IP66	
Load limit	Safe	% of E _{max}	150	
	Ultimate		300	
Material	Spring element		Aluminum, anodizing	
	Cable		Φ5.6; 4-wire; PVC	
Cable length		m	3.0	
Maximum platform size		mm	600*600	
Offer center load error (OIML R76)		% of AL/cm	< ± 0.0019	
Weight; approx		kg	1.7	
Fatigue life		cycles @E _{max}	> 1,000,000	
Deflection at E _{max} ; approx		mm	< 0.5	
Barometric pressure effect on Zero Output		Vmin/kPa	< 1.0	
Mounting screw	Size/Grade		M8 / 8.8	
	Recommended torque	N.m	100-300kg: 25; 500-750kg: 30	

Notes:

¹⁾ Error due to the combined effect of non-linearity and hysteresis

²⁾ The sum of errors due to Temperature Effect on Output comply with the requirements of OIML R60 and NIST HB44

³⁾ AL = Applied Load

Cable Colour Code

Red	+Excitation
Black	-Excitation
Green	+Signal
White	-Signal
Yellow	Shield

Shield not connected to load cell body

Interchangeable Products:

Manufacturer	Model
Zemic	L6G